

# THE HURWORTH

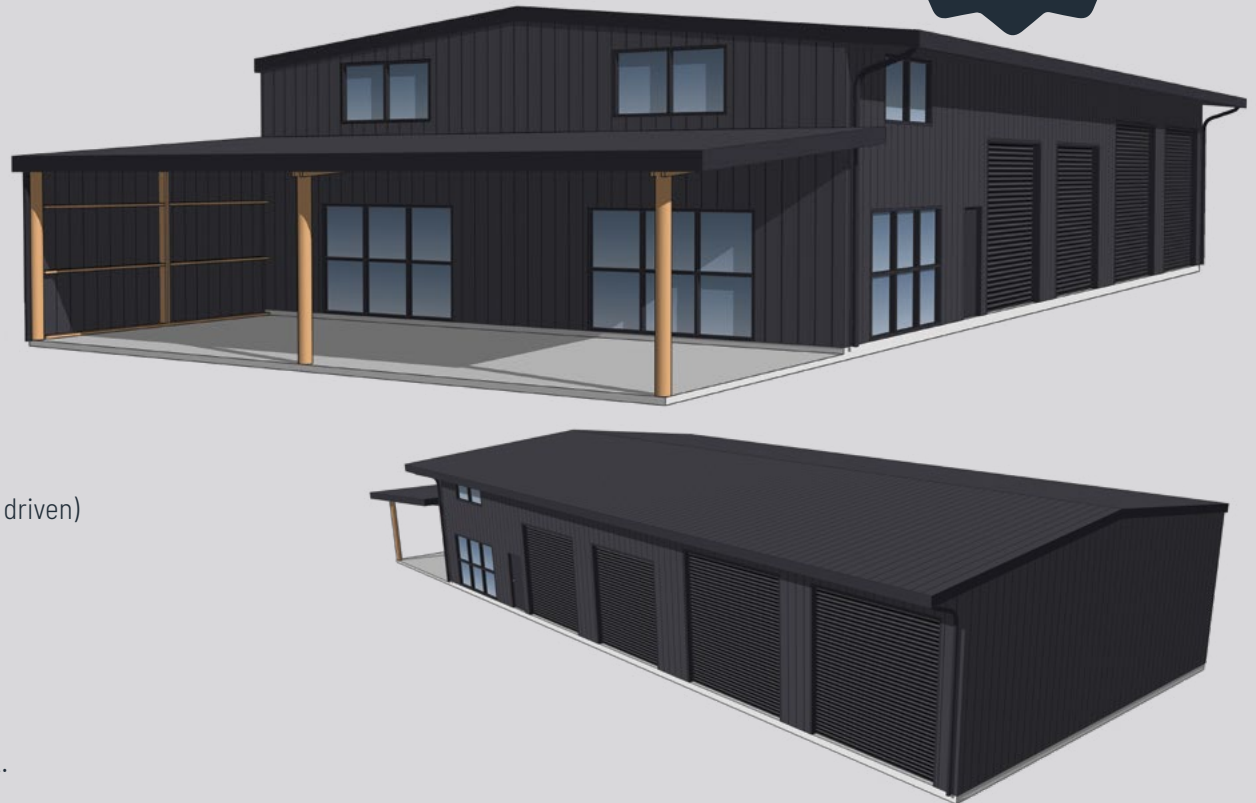
## 25m x 12m INDUSTRIAL WORKSHOP

Spacious workshop area at 25m x 12m and from 4.8 to 5.2m in height, and mezzanine floor for admin/ accounts. Perfect building for small to medium businesses with an eye on growth.

Kit includes:

- Fully enclosed, with 5-rib roof and wall in 0.40mm coloured steel
- 1.0m rafter overhang to the front
- Coloured steel ridging, barge and corner flashings
- Vermin-proof flashings to base
- Gutter and PVC downpipes each side of gable
- Standard building paper and netting to roof
- Birdproof rafter and purlin design
- Full mezzanine floor to bay 1
- 2 x domestic series coloured steel 1/A roller door 3.2mH x 3.2mW
- 2 x industrial series coloured steel 2 roller doors 3.8mH x 3.8mW (chain driven)
- Electric motors for roller doors included
- 1 x Heavy duty personnel access door in full aluminium frame
- 3 x 2000 x 1000H double glazed sash opening windows
- 3 x 3000 x 2000H double glazed stacker doors (Keyed)
- 1 x 5.0m x 12.0m roof canopy
- Price includes delivery anywhere in the North Island – South Island POA.

STARTING FROM  
**\$130K**  
 +GST (KIT ONLY)



For customisation or other Industrial SuperSheds, get in touch.  
 Call 0800 862 010 or go to [sheds4u.co.nz/industrial-sheds](https://sheds4u.co.nz/industrial-sheds)