

THE ARIZONA

48m x 14m INDUSTRIAL SHED

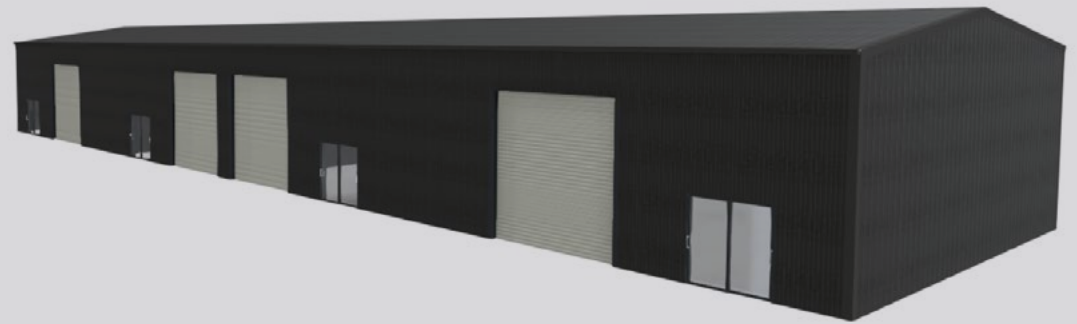
Divided into four separate units with three internal walls. 48m wide x 14m deep. Ample headroom too - 5.4m to 6.6m (10°pitch) - a space to grow into.

Fully enclosed in 0.40mm coloured steel, with 3 internal walls.

Your kit contains:

- Rental income opportunity with 3 Internal walls (framed with girts, lined with coloursteel on one side)
- Roof and wall cladding is coloured steel 0.40mm steel
- 1 x clearlight sheet to roof each side of gable, per bay
- Coloured steel ridging & barge flashings
- Coloured steel corner flashings
- Vermin-proof flashings to base
- Coloured steel 175mm box gutter each side of gable (downpipes excluded)
- Self-supporting white synthetic building paper to roof
- Birdproof rafter and purlin design
- 4 x coloured steel (chain driven) industrial series 2 roller doors 4.2mH x 4.2mW installed
- 4 x ranch sliders
- Price includes delivery anywhere in the North Island - South Island POA.

STARTING FROM
\$195K
 +GST (KIT ONLY)



For customisation or other Industrial SuperSheds, get in touch.

Call 0800 862 010 or go to sheds4u.co.nz/industrial-sheds