

THE ALABAMA

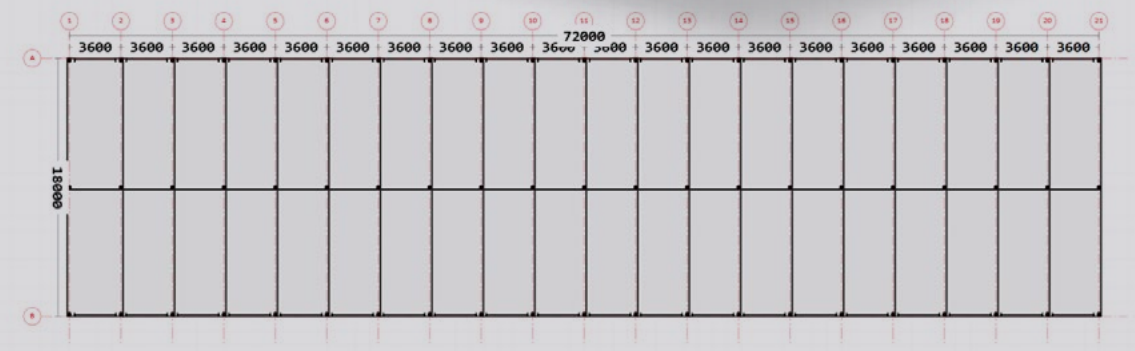
72m x 18m INDUSTRIAL STORAGE

This impressive 72m wide x 18m deep with one centre pole per bay (clearspan also available – please enquire). With 3.8 to 4.2 m of headroom (roof at 3° pitch) it's super-spacious, fully enclosed, and has internal walls at every bay and down centre of the ridge.

This fully-enclosed shed features:

- 5 Rib Zincalume 0.4mm steel roofing
- 5 Rib coloured steel 0.4mm wall cladding
- Coloured steel barge and corner flashings
- Vermin-proof flashings to base
- Coloured steel 175mm box gutter (downpipes excluded)
- Synthetic self-support building paper to roof
- Birdproof rafter and purlin design
- 40 x domestic series coloured steel 1/a roller doors 3.2mH x 3.0mW
- H5 machined rounded timber poles
- MSS steel high span rafters
- SG8 machine-gauged purlins & framing timbers
- Timber girts for bay dividers included
- Fully engineered site-specific plans, all hardware & fastenings included

Please get in touch to talk about this or any other industrial SuperShed. All prices include delivery anywhere on the North Island.



For customisation or other Industrial SuperSheds, get in touch.
 Call 0800 862 010 or go to sheds4u.co.nz/industrial-sheds